

The Course Placement Chart shows the progression of English, ESL, Reading and Math courses that students should take to complete their requirements. **The starting course can vary based upon the placement test, high school transcripts or other college transcripts.** Please make an appointment to see a counselor before registering for classes.

Assessment scores are valid for two years from your test date.

Questions regarding placement should be directed to Counselors prior to starting the sequence.

If English is not your native language and you have taken the native English Placement Test, the placement on your report may not be accurate for you. The native English test does not accurately measure reading and grammar skills of non-native speakers of English.

If English is your second language, it is recommended for you to take the ESL placement test, which can correctly place you in the appropriate ESL courses.

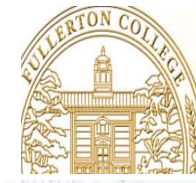
Re-testing Options:

1. You may re-test every 90 days.
2. You may re-test with a counselor approval: Please bring documentation to support re-testing, such as high school transcripts, other California Community College test scores with placement or other college transcripts.



Steps to succeed at Fullerton College

1. ____ Admission Application
2. ____ Orientation
3. ____ Assessment
4. ____ Official Documents
5. ____ Group Advising
6. ____ Counseling
7. ____ Financial Aid
8. ____ Schedule of Classes
9. ____ Permit to Register
10. ____ Registration
11. ____ Fees
12. ____ First Day Attendance
13. ____ Educational Planning
14. ____ Student Services



Assessment Center

Course Placements

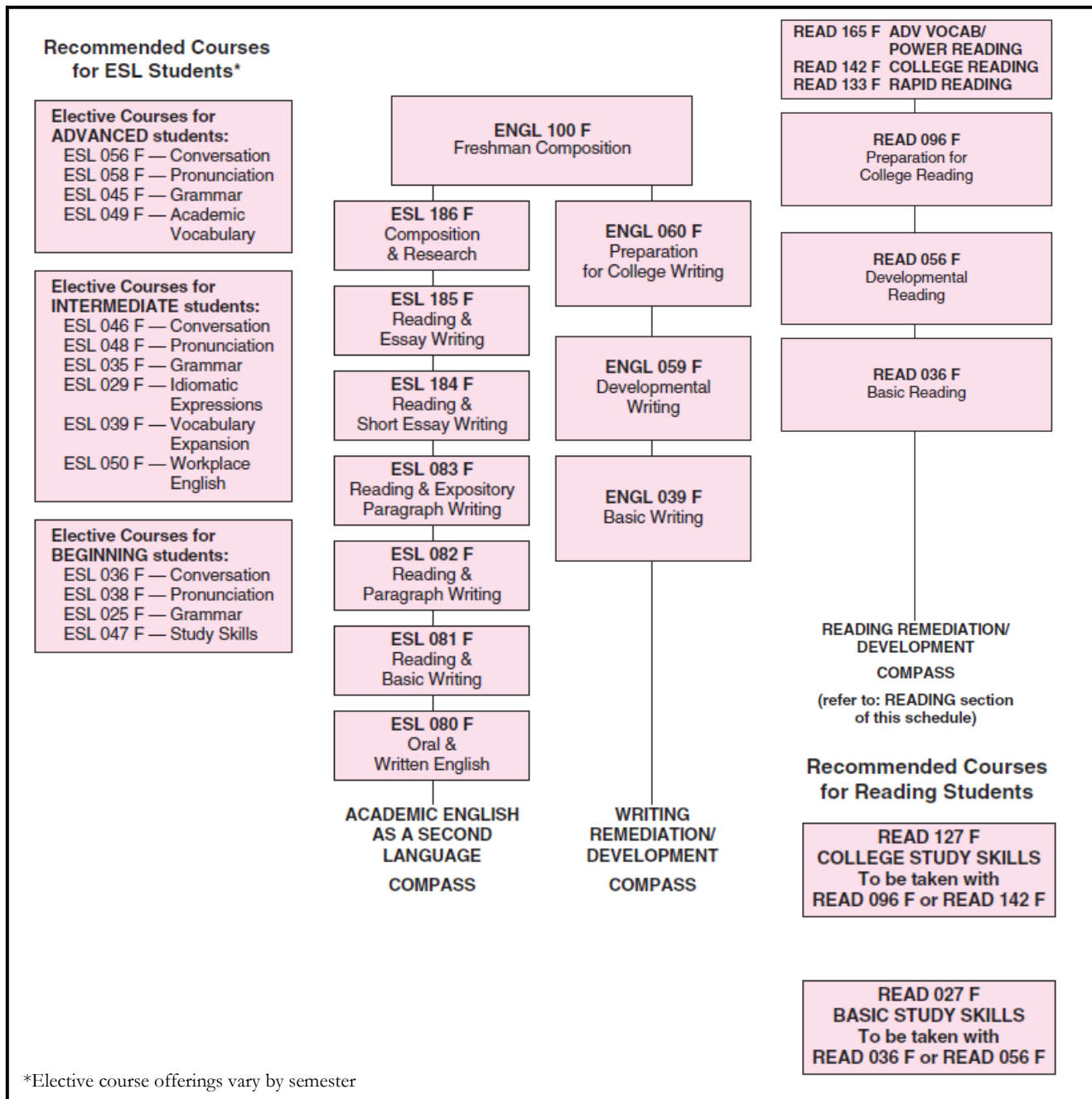
- English
- ESL
- Reading
- Math

Location: Room 513
Phone: (714) 992-7117
Hours: Mon to Fri
8am – 12pm and
1pm – 4pm

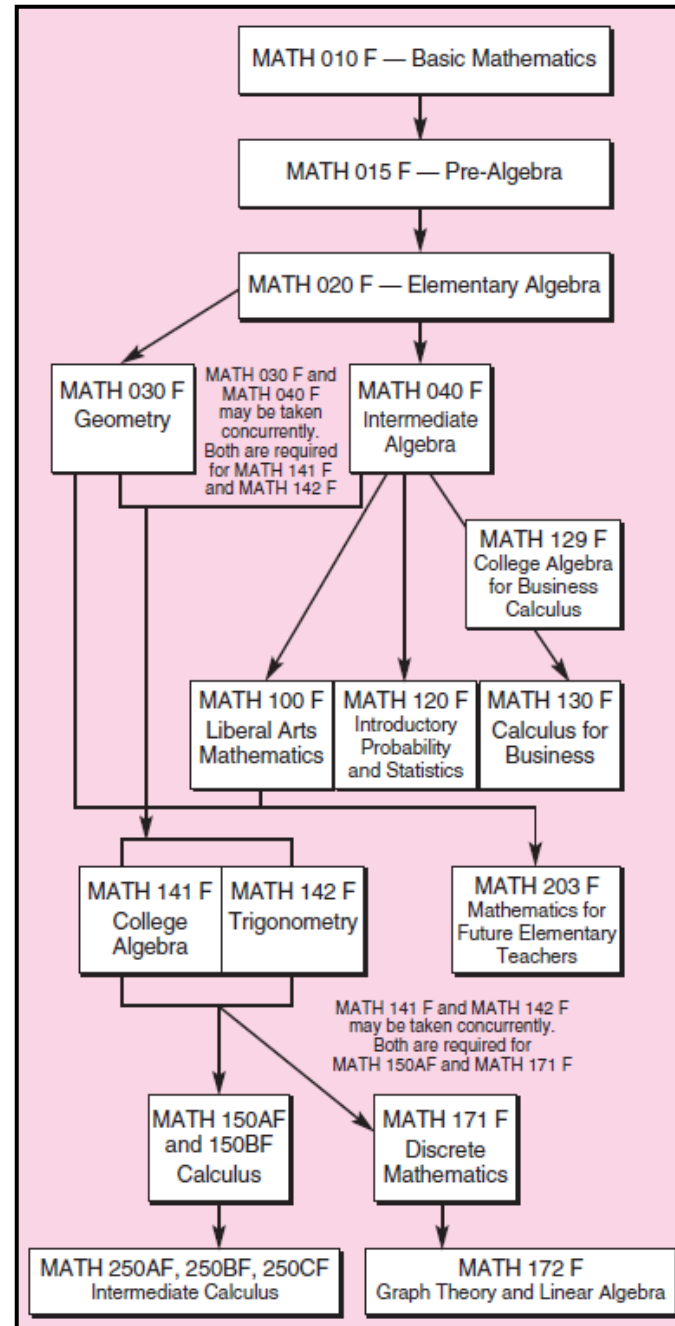
For Saturday hours please visit:
http://staffwww.fullcoll.edu/gmenchaca/ass_sch.htm

Fullerton College Course Placement Chart

English as a Second Language, English, and Reading Course Sequence



Math Course Sequence



*Elective course offerings vary by semester